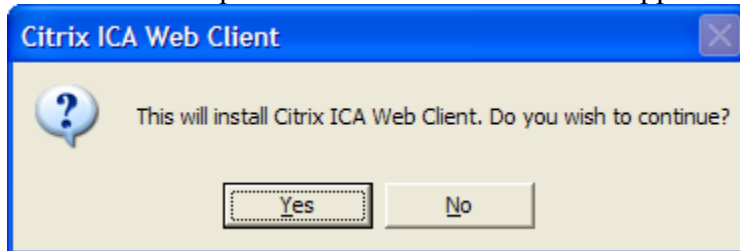
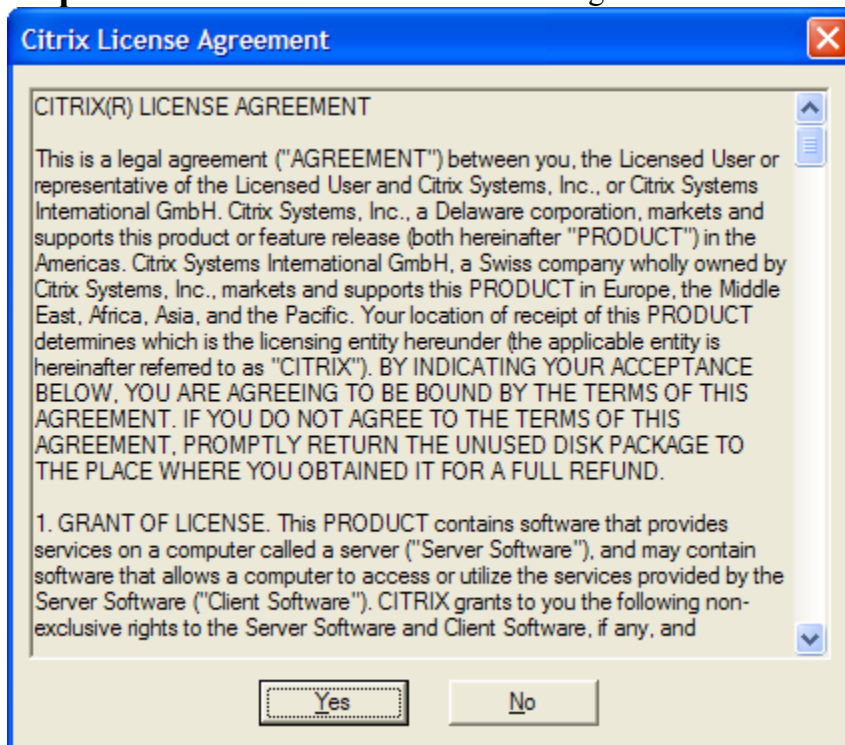


Citrix Installation Instructions

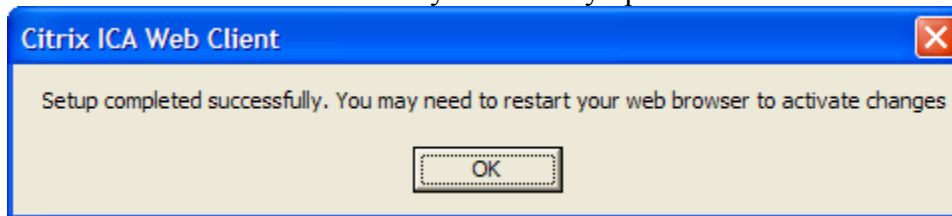
Step 1: Locate the Citrix ICA client for windows (**ica32t.exe**) located on the Installation CD provided from SMC. **Double click** the **icon** to start the installation. Some files will be copied then the screen below will appear. Click **Yes**.



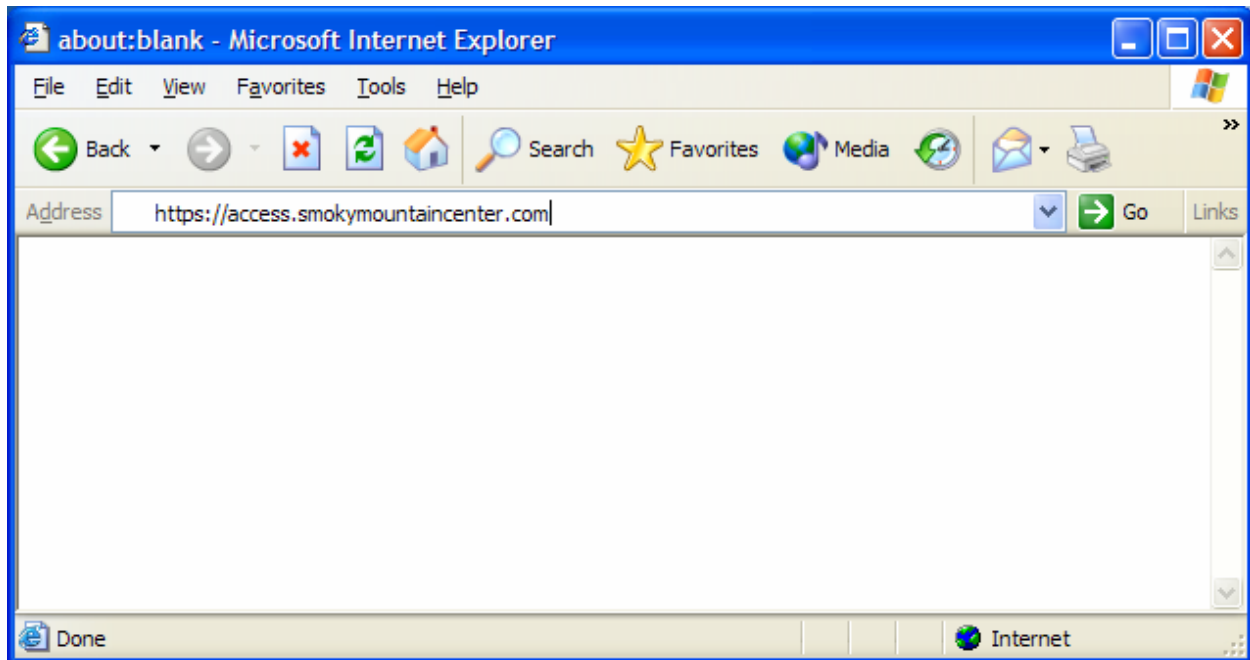
Step 2: Select **Yes** to the Citrix License Agreement.



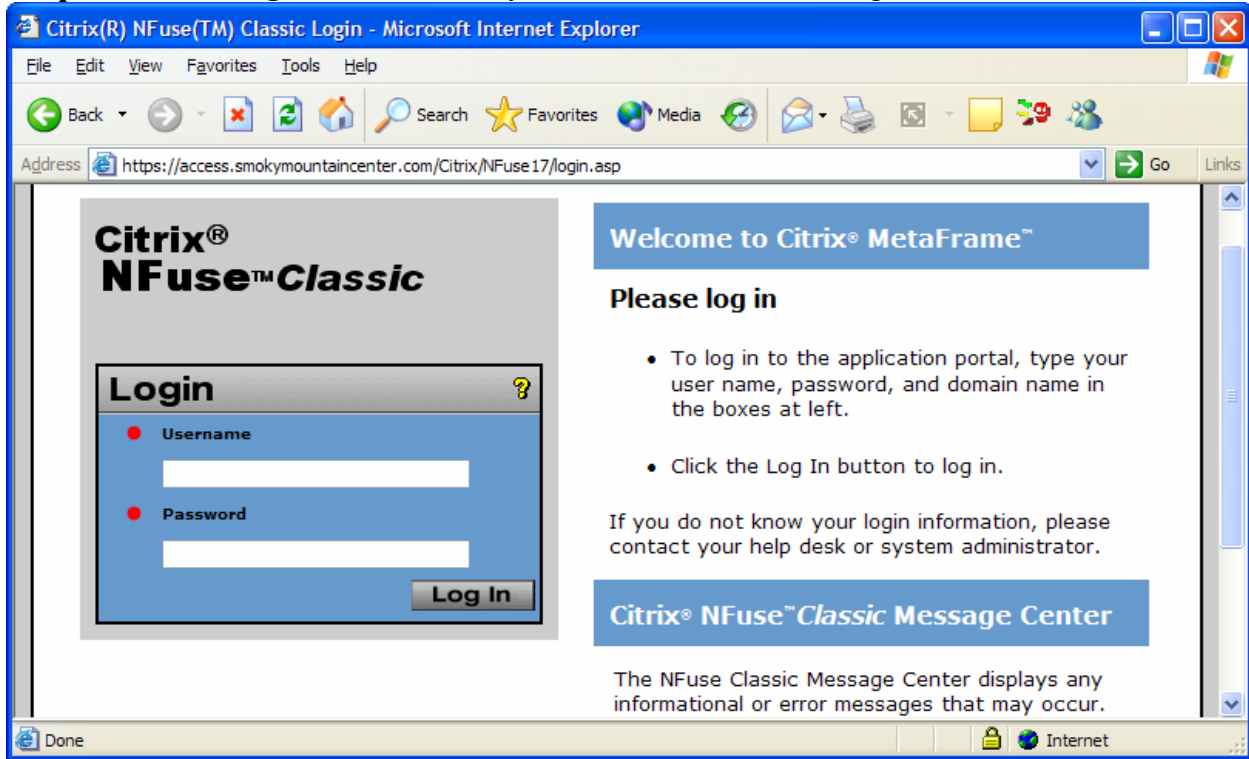
Step 3: More files will be copied and then the screen below will appear. Click **OK** then restart all browsers if you have any open.



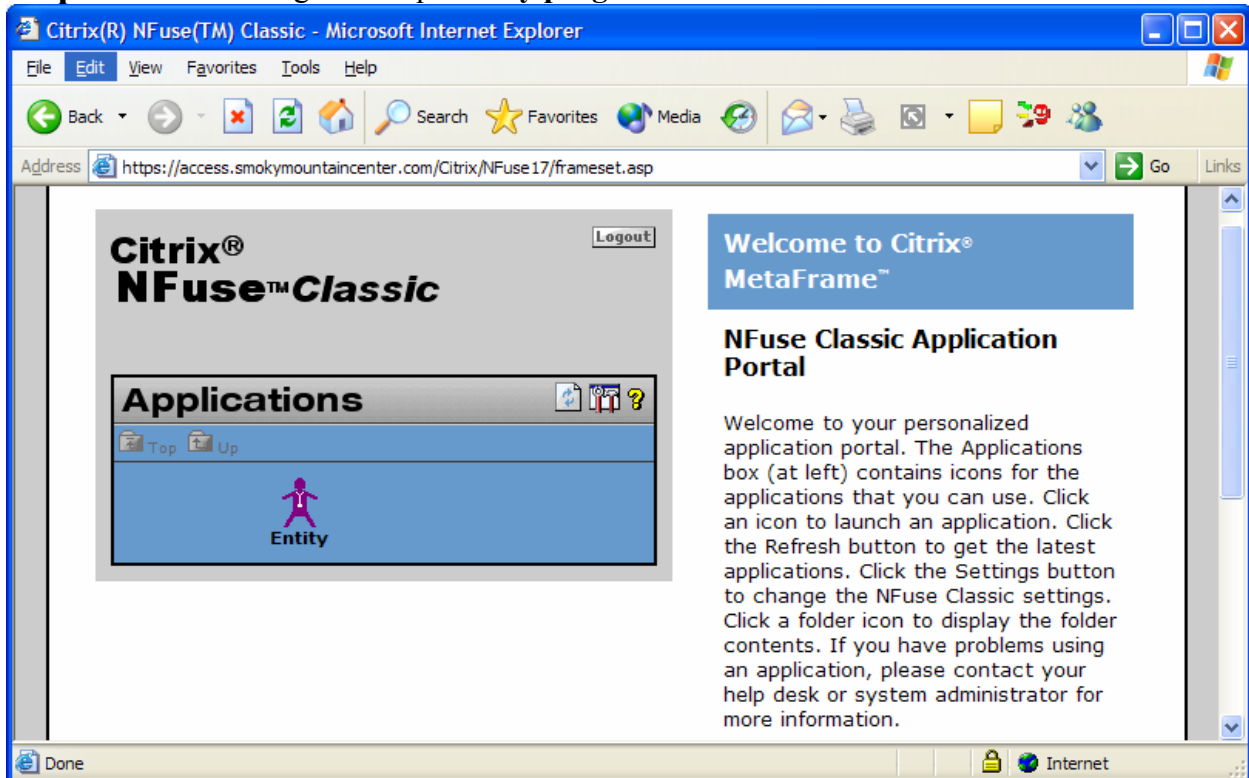
Step 4: Open **Internet Explorer** and enter <https://access.smokymountaincenter.com> in the address bar. Then click **Enter**.



Step 5: Next, **Log In** to Citrix with your network username and password.



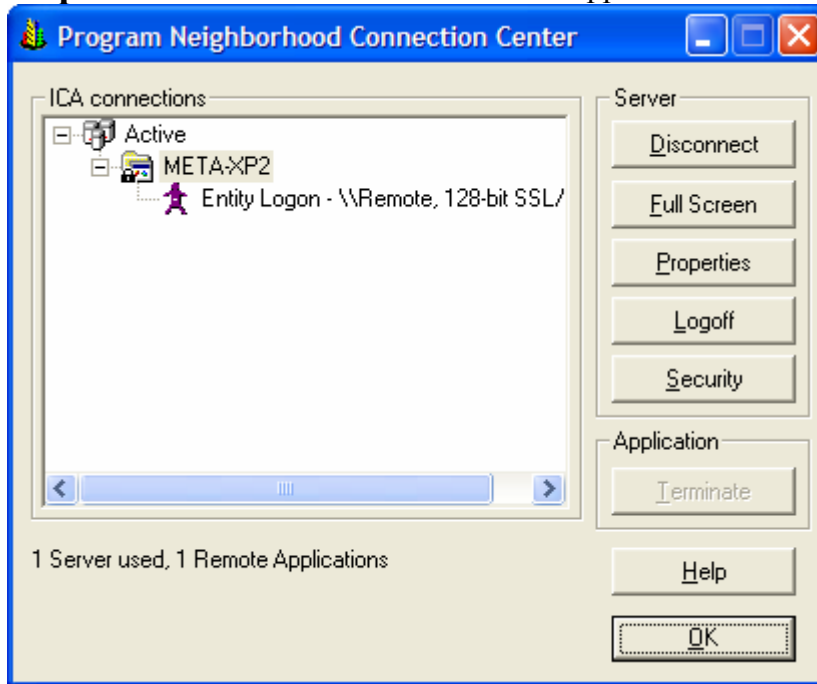
Step 6: Click a Program to open. **Any program will work.**



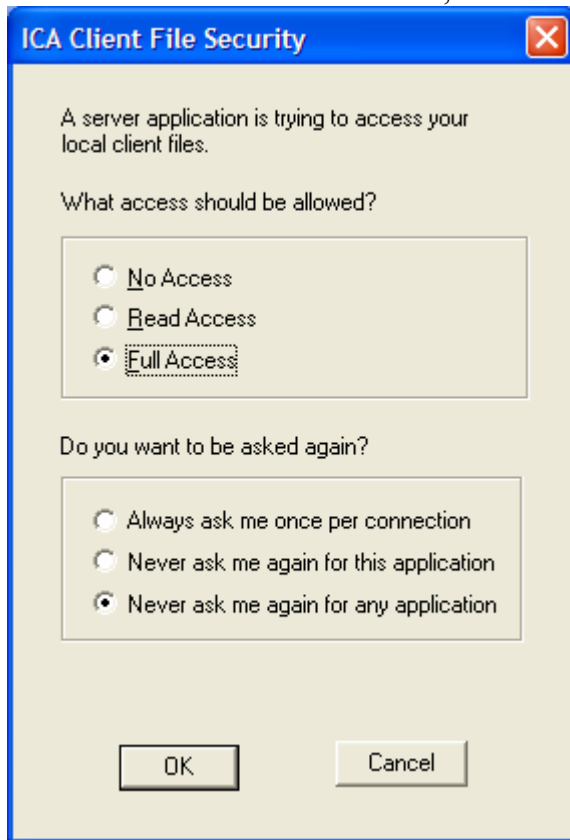
Step 7: After the program is open. **Double Click** the ICA icon next to the clock.



Step 8: A screen like the one below will appear. Select the **security** button.



Step 9: then select **full access** button and the **never ask me again for any application** button. Then click **OK**, then **OK** again.



Last Step is to **log out** of Citrix **completely**. Your installation is complete.